



## BONE TUMOR

- Surgery date : March 2018
- Surgeon : Prof. Sirveaux
- Hospital : CHU Nancy (France)

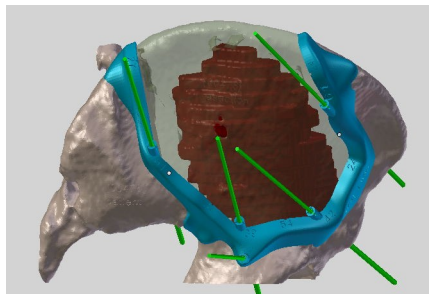
« Thank you for this precious collaboration as this surgery would not have been possible without guides ! »

- **Challenge** : Resection of a **large pelvic tumor** with 5 resection planes guided by one custom made instrument

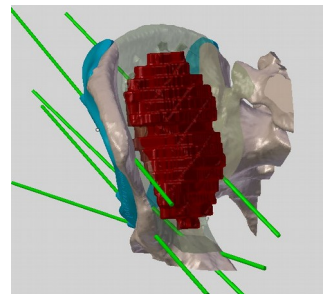
## Complex pelvic tumor resection

P  
L  
A  
N  
N  
I  
N  
G

The planning of the **bone tumor resection**, supervised by Prof. Sirveaux, was performed by 3D-Side and the associated surgical guide and bone models were designed.

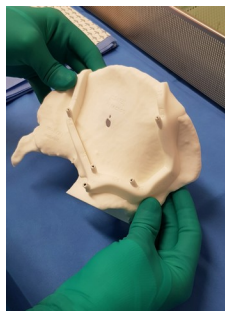


Lateral view



Posterior view

By means of high-tech 3D-Printing the **anatomical models** of the patient and the **resection guide** were produced.

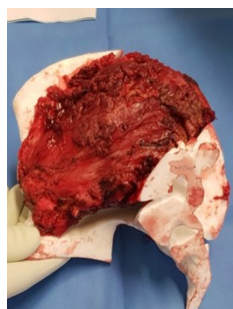
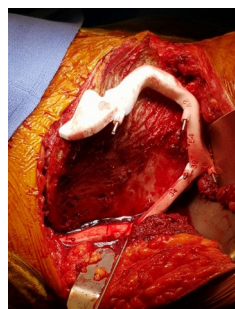


3D-printed anatomical models and guide

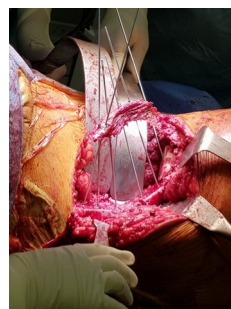
P  
R  
O  
D  
U  
C  
T  
I  
O  
N

The **anatomical models** supported the surgeon during surgery. The **surgical guide** allowed to resect the bone tumor accurately.

S  
U  
R  
G  
E  
R  
Y



Bone tumor resection



Reconstruction with K-wires and cement